

**Salford City Council**

# **Post 16 Education and Training Offer**



# Education



# Training & Apprenticeships



Prince's Trust



# Supported Internships



# New Supported Employment Service



# What's on offer at College

**Foundation Skills  
for Life - Entry  
level 1**

**Foundation Skills  
for Life - Entry  
level 2**

**Foundation Skills  
for Life – Entry  
Level 3**

**Vocational Level 1  
Course – 1 year  
course requires  
grades 2-3 GCSE**

**Vocational Level 2  
Course – 1 year  
course requires  
grades 3-4 GCSE**

**Vocational Level 3  
Course – 2-year  
course requires  
grade 4+ GCSE**

**A Level - 2 Year  
course requires 5  
or more grade 4/5  
GCSE**

# Salford City College (5 college centres)

[Pendleton campus](#) - mainly A levels and some vocational courses such as performing arts, fine art

[Eccles campus](#) all vocational courses plus large foundation skills department for those with special educational needs ([SEN](#)).

[Worsley College](#) specific vocational courses, many at level 1 and 2. Including hospitality, hair, beauty, childcare and health and social care. They also run the Princes Trust TEAM programme, aimed at gaining new skills, a qualification and meet new people.

[Futureskills](#) specific vocational courses in creative music, digital production, IT, games design, media and media makeup. courses run from level 1 – level 3 (and some university level)

[City Skills](#) specific trade courses in brickwork, joinery, multi trades, plastering, painting & decorating, plumbing, electrical and motor vehicle.

Check out some upcoming events [here](#)



# Other Greater Manchester Colleges

[The Manchester College](#) largest provider in the region of vocational programmes, plus A levels. They have a number of centres, which specialise in different areas. There is a specific offer for those with SEN.

[Trafford College](#) two main college centres in Stretford/Old Trafford area and the other in Altrincham. Specialise in different areas.

[Bolton College](#) wide of vocational course sin the centre of Bolton. Courses are from level 1 to level 3 and also include foundation skills for independence for those with SEN



# Greater Manchester Open Days



## [Bolton College Open Event](#)

Wednesday 8<sup>th</sup> February 5pm – 8pm

---



## [Trafford College 16-19 Open Event](#)

Thursday 16<sup>th</sup> March 4:30pm – 7 pm

---



## [Manchester College School Leaver Open Event](#)

Thursday 9<sup>th</sup> March 5pm – 7 pm

# Study Programme

A study programme is a tailored learning package consisting of:

- classroom-based work
- work experience
- employability workshops
- pastoral support
- enrichment opportunities.

They are designed to be learner specific to suit your needs and help you get to where you want to be in your career so that you can feel confident going into your next phase of life.

Study programmes are usually flexible, on average you could do 3-4 days per week depending if you need to resit English or Maths.

They can last for up-to 12 months and once completed, you could then go into a traineeship, an apprenticeship or further education.

There is usually a training bursary for attending to cover travel/lunch. Usually around £20-30 per week (based on attendance and family circumstances)



# Supported Internships

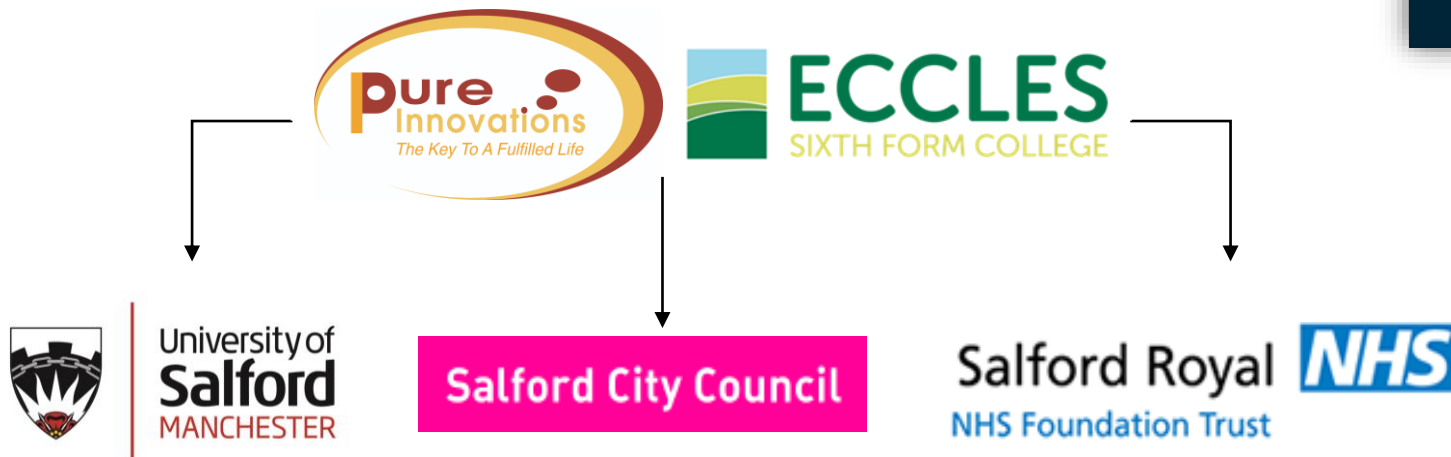
Supported Internships are structured study programmes designed for young people aged 16-24 with Education Health Care Plans (or statements of SEN).

Internships are based with an employer and enable young people with learning difficulties and/or disabilities, to develop workplace skills and experience to achieve paid sustainable employment.

Internships typically last for one academic year, and include unpaid work placements of at least six months and support the young person to move into paid employment at the end of the programme, wherever possible.

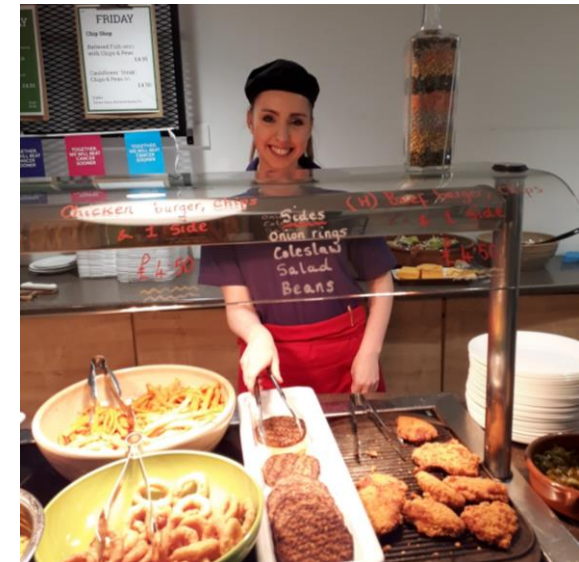
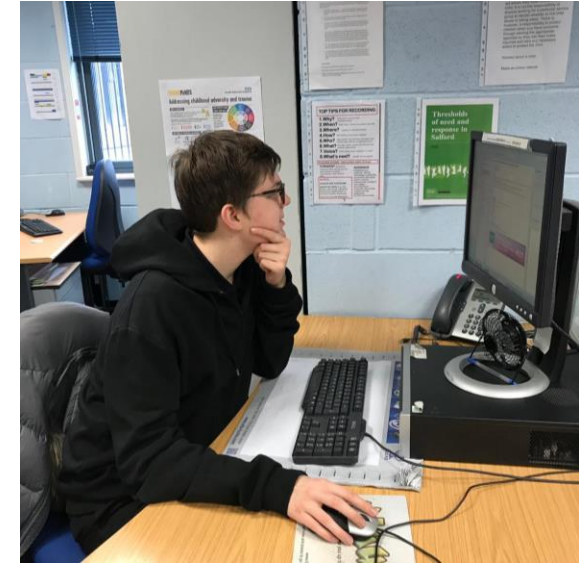


Supported Internship – Expression of interest



# Supported Employment Service

- Funded by the Department for Work and Pensions (DWP) the service is a Salford Council lead approach aimed at helping unemployed residents aged 18yrs or over with learning difficulties and/or autism to secure permanent and sustainable employment.
- The service aims to support 140 participants (March 2023-March 2025) to identify job goals and provide access to any relevant training they need, as well as helping them build their confidence in the workplace, develop their skills and create friendships.
- The programme consists of up-to 12 months of pre work support to help participants to develop their skills, experience and confidence to secure employment, then up-to 12 months in-work support to ensure participants sustain employment.
- To access Salford's Local Supported Employment Service, residents must:
  - ✓ Be aged 18 or over and a Salford resident
  - ✓ have a learning disability and/or autism and meet the Equality Act 2010 definition of disability
  - ✓ be known to the Local Authority and/or Adult Social Care
  - ✓ be unemployed, not in paid employment (including paid self-employment)
  - ✓ not be on any other Department for Work and Pensions (DWP) employment programme or provision
  - ✓ have an entitlement to public funds, for example, welfare benefits
- Salford Council are hosting monthly drop-in sessions where you can find out more about Salford's Supported Employment Service. Feel free to come along to any of the following for more information:
  - **Thursday 26<sup>th</sup> Jan (10am until 2pm) Swinton Gateway - 100 Chorley Road, Swinton, M27 6BP**



Please contact for further details: [nicola.griffiths@salford.gov.uk](mailto:nicola.griffiths@salford.gov.uk) or [david.timperley@salford.gov.uk](mailto:david.timperley@salford.gov.uk)

# Apprenticeships

An [Apprenticeship](#) is a paid job which offers hands on work experience alongside training.

Apprenticeships are great for those who enjoy practical learning and want to upskill, or learn a completely skill. They can take from 1 to 5 years to complete depending on the level.

There are 4 different qualification levels that you can achieve depending on your apprenticeship level:

If your child has an EHCP this should be shared with the provider so the correct support can be offered, contact your SENCo at your school for more information

Intermediate	Level 2	GCSE
Advanced	Level 3	A-Level
Higher	Level 4-7	Foundation degree and above
Degree	Level 6-7	Bachelors or masters degree



# Advice & Guidance

All NEET young people aged 16-18 in Salford are entitled to support to help them get into education, employment or training. Young people with an Education Health and Care Plan (EHCP) are also entitled to these services up-to age 24.

First point of contact will be your careers advisor at school/college, who will be able to help you explore all your different career options, provide you with specific industry information and give you advice on your next steps.

## Other advice and guidance services:



[The Career Connect](#) (Connexions) service helps young people aged 15-19 achieve their potential by providing high quality employment and training services, as well as professional careers guidance and support for young people who are at risk of ending up not in education, employment or training once they leave school.



[The National Careers](#) Service provide information, advice and guidance to young people over 18 and can help you make those tough decisions on learning, training and work at all stages in your career, they also offer web-chat services for ages 15+ for anyone who is in need of guidance.



[Jewel](#) provides valuable information for the Jewish Community who can guide you on what careers you should be considering and your next steps, offering training, placements and pre-employment workshops.



[Ambitious About Autism](#) provides help to Autistic young people across England through the award-winning [Employ Autism programme](#) for autistic people aged 6-25 as well as their [Supported Internship Programme](#).

# Advice & Guidance



[The European Social Fund](#) (ESF) Programme can help and support you develop the skills and confidence you need to find work. ESF projects are delivered within the community and taking part is voluntary. You can take part in an ESF project if you are ages 16-14 and not in education, employment or training. This funding will be coming to an end in June 2023. Contact [stacey.burgess@careerconnect.org.uk](mailto:stacey.burgess@careerconnect.org.uk)



Travel: Getting the bus alone for the first time can be daunting, [here is some important information](#) on how you can make your trip as easy and straight forward as possible.



Struggling with your mental health? Support is available for you, 42<sup>nd</sup> Street are available to support you with your emotional well-being by offering effective personal approaches, as well as the NHS [CAHMS](#) service plus many others, click here for a [list of services](#)



[Salford Information Advice and Support Services](#) (SIASS) offer information, advice and support to children, young people and parents about special educational needs and disability. This includes matters relating to health and social care. We have a role in ensuring your views are heard, understood and respected.

[The Local Offer](#) is for children and young people with special educational needs or a disability, Here you will find a directory of advice and support services available.



If you require any more information about the support through local Job Centre Plus, you can contact Salford's Disability Employment lead [raegan.robinson@dwp.gov.uk](mailto:raegan.robinson@dwp.gov.uk)

# Financial Support



OURPASS

[Greater Manchester Our Pass](#) is a free bus pass for young people aged 16-18 who live in Greater Manchester, making it easier for them to travel around the city. Our Pass provides access to a range of exclusive offers, discounts and experiences for 16–18-year-olds in Greater Manchester. There is a one-off £10 administration fee, and an additional £10 charge if you ever need a replacement card. The pass will expire on the 31<sup>st</sup> of August after your 18<sup>th</sup> birthday.



Prince's Trust

[Prince's Trust Development Awards](#) are for those aged 16-30 who live in the UK and are unemployed or working less than 16 hours per week. The Development Awards can cover the cost of course fees, tools or equipment to help you achieve your goal. It can support accredited course fees up-to Level 3, tools, uniform or equipment, job license fees and transport to your new job until your first pay slip.




[Access to Work](#) can help you get or stay in work if you have a physical or mental health condition or disability, the level of support you can receive will depend on your needs. It can fund specific equipment that you need for a job, or even support with travel and other costs.

[Better Off Calculator](#) can help you know the impact of your young person moving into work or training, on your family income. It is free to use and simple and quick to use. Your Job Centre work coach can help you to complete it but you can use it on your own.

[Care to Learn](#) is a scheme for young parents which can help with childcare cost while you study, the scheme is available for publicly funded courses in England, you could be entitled to up-to £175 per child per week.

Your college can also provide you with a [bursary](#) fund to support you with clothing, books and other equipment you may need during your course (e.g. a camera for a photography student) as well as transport and lunch. Bursary's are also available if you are continuing a course you started aged 16-18 and those who have an Education Health and Care Plan (EHCP) training providers have a similar offer.



Salford Council offer a [Welfare Rights Service](#) consisting of free, confidential, specialist advice, case work and representation on welfare rights for people who live in Salford.

# Other Advice For Parents

## Financial Advice

### Cost of Living Crisis

We know the [cost of living crisis](#) is effecting everyone right now, Salford Council have some ways they can make troublesome times easier for you and your family.

### Welfare Rights Advice

[Welfare Rights Service](#) offer free, confidential, specialist advice, case work and representation on welfare rights for people who live in Salford.

### Your Child Benefit Allowance

Child Benefit stops on 31 August on or after your child's 16th birthday if they leave education or training. It continues if they stay in approved education or training, but you must tell the Child Benefit Office. You'll be sent a letter in your child's last year at school asking you to confirm their plans. Education must be more than average 12 hours a week supervised study or work experience.

## Useful Information

### What information on my child will be shared once they leave?

Please contact your school/college to find out what information is shared and why once they leave school, in most cases

### Understanding the New Grading system

Students now use a [numerical system](#) from 9-1 rather than the traditional A-E system.

### Understanding different qualification levels

There are [9 different qualification levels](#), after school your child will most likely be going onto a Level 2 or 3 course.

### Functional Skills v GCSE

Functional skills teach you the basics of what you'll need to know (Maths & English) in day to day life. Many employers consider functional skills to be equivalent to GCSE.

### Find my Future

For more information, visit the [Find My Future](#) page.

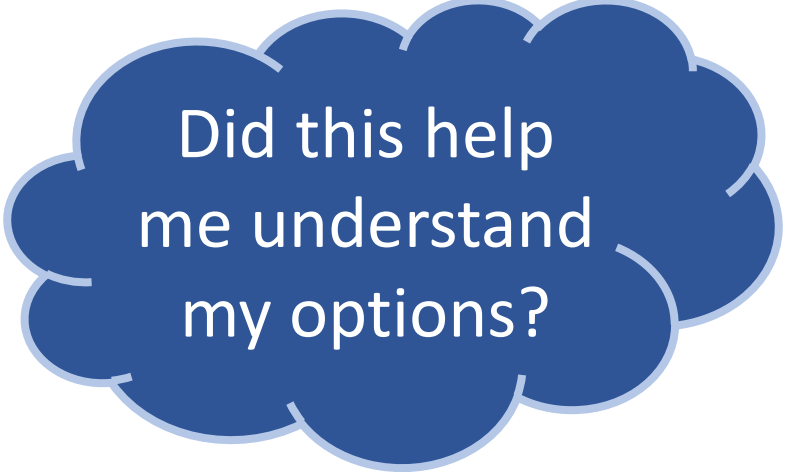
# Next Steps

Once your child leaves school/college, there are some important decision to make for their future. Supporting them to choose the right post 16 option for them can really help to develop confidence, knowledge and experience and can get them ready for employment or further education like university.

If you or your child is unsure of what to do, you can talk to their careers advisor who will be able to provide you with even more information about the options, and point you in the right direction so that you feel comfortable and confident in the next steps

- [Further Education](#)
- [Study Programme & Traineeships](#)
- [Supported Internship](#)
- [Supported Employment](#)
- [Apprenticeship](#)

# Any questions?



Did this help  
me understand  
my options?



Where do  
I go from  
here?



Do I feel  
more  
confident?



Have my  
questions  
been  
answered?

For further details, please contact [SkillsAndWork@salford.gov.uk](mailto:SkillsAndWork@salford.gov.uk)